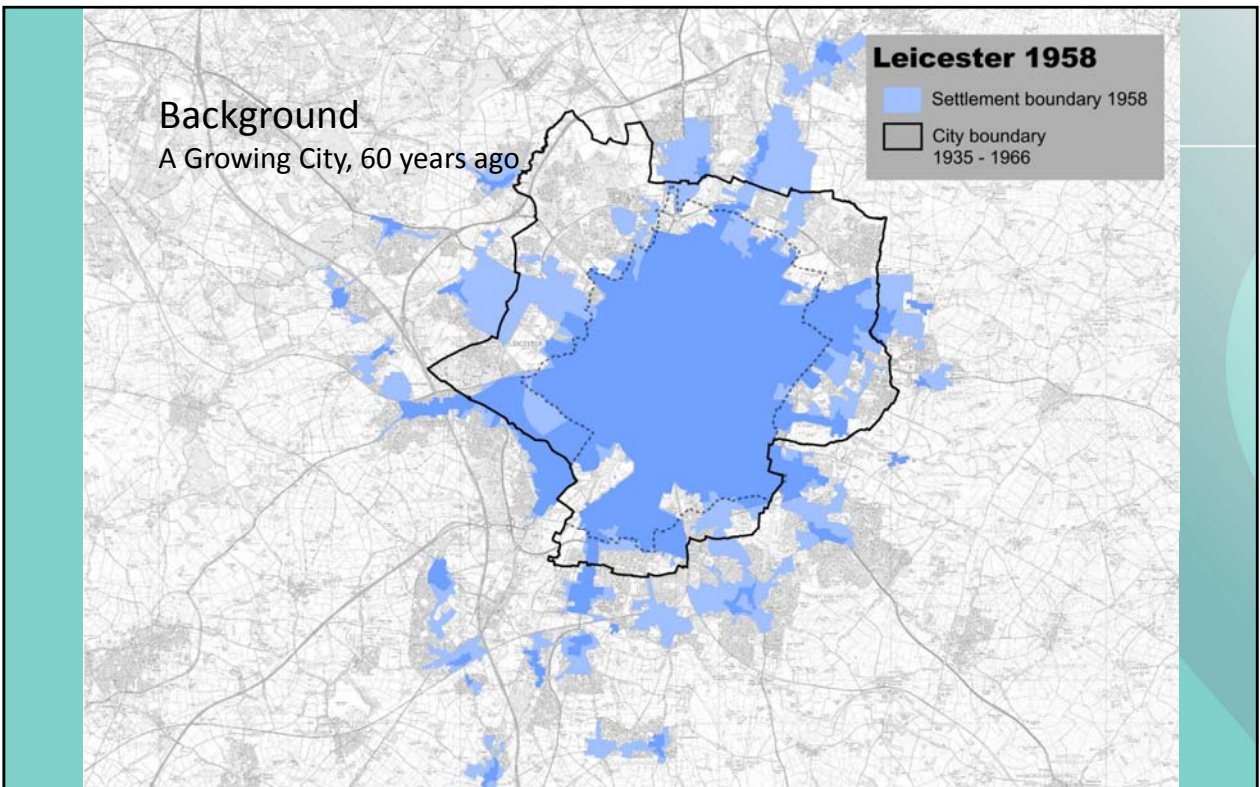
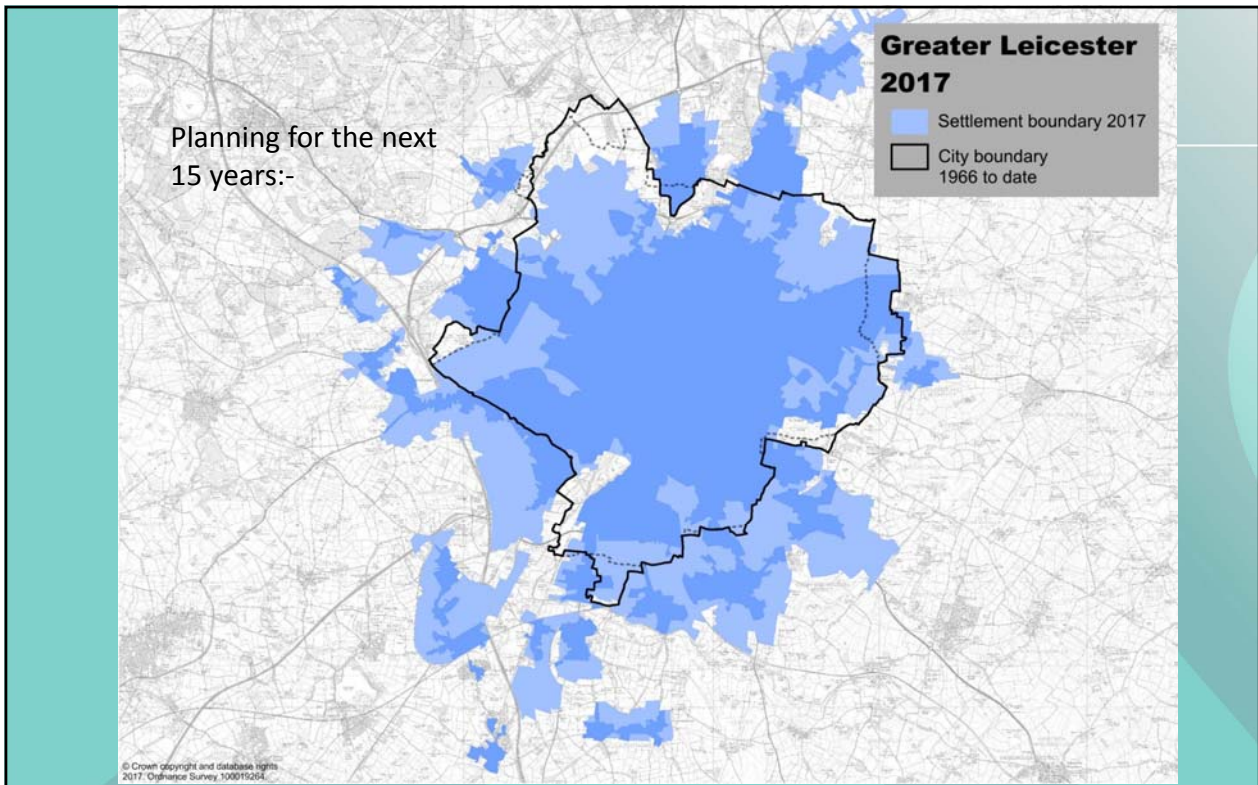


New Leicester Local Plan – 7th August 2017

Saffron Community Ward Meeting





Why - The Importance of a Local Plan

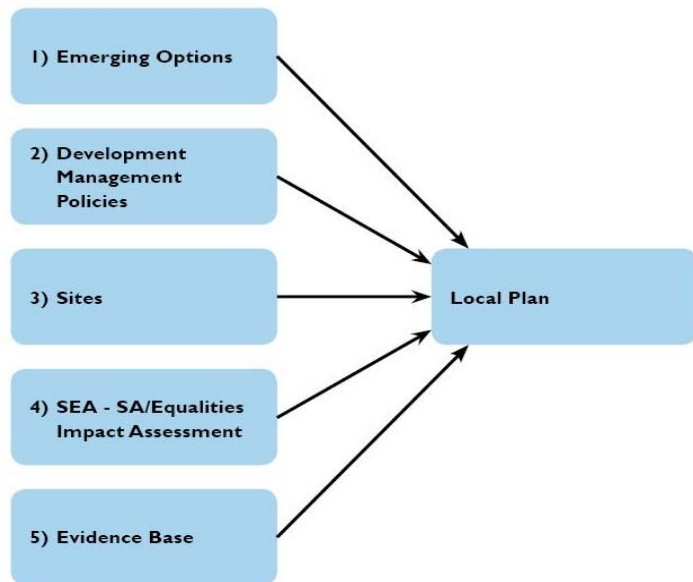
- Sets council's policies and allocates sites up to 2031
- Meeting needs for homes, jobs, shopping, and leisure
- Encourage investment & economic growth
- Place making – what kind of City do we want?
- Policies to consider planning applications



What - Consultation Documents

Five documents:-

- Emerging Options
- Development Management Policies
- Sites Options
- Sustainability Assessment
- Supporting Evidence



When - Timetable

- Full Council – 6th July 2017
- Emerging Options, Sites & Development Management policies consultation: July - October 2017
- Scrutiny during Consultation Period
- Draft Local Plan: Winter 2017 -Spring 2018
- Public Examination and plan adopted: end of 2018

How - Consultation Started 26th July

- City wide leaflet drop
- On line consultation, on social media and in libraries
- Exhibitions
- Community Ward meetings
- Stakeholders
- 14 weeks - 26th July to 31st October 2017



In more detail :-

- Significant population growth
- Identify land for new
 - Housing
 - Employment
 - Education
 - Community facilities



Key Issues /Challenges

Housing

- Housing Need -34,000 by 2031 (1,700 a year)
- Where should growth go – difficult choices
- Any unmet need will need to be redistributed to adjacent districts



City Council

Key Issues /Challenges

Employment :-




- Future Employment Needs – 45ha Employment land
- Office provision in the City Centre –where?



Leicester
City Council

Key Issues/ Challenges

- City Centre; Regeneration Area;
- Character Areas
- Protect and enhance the City's heritage and environment

Key Issues/ Challenges

Shopping

- City Centre
- Locally - suggested changes to boundaries of local shopping centres
- Hot Food Takeaways /gambling shops

Transport

- Public transport,
- Reduce congestion,
- improve air quality





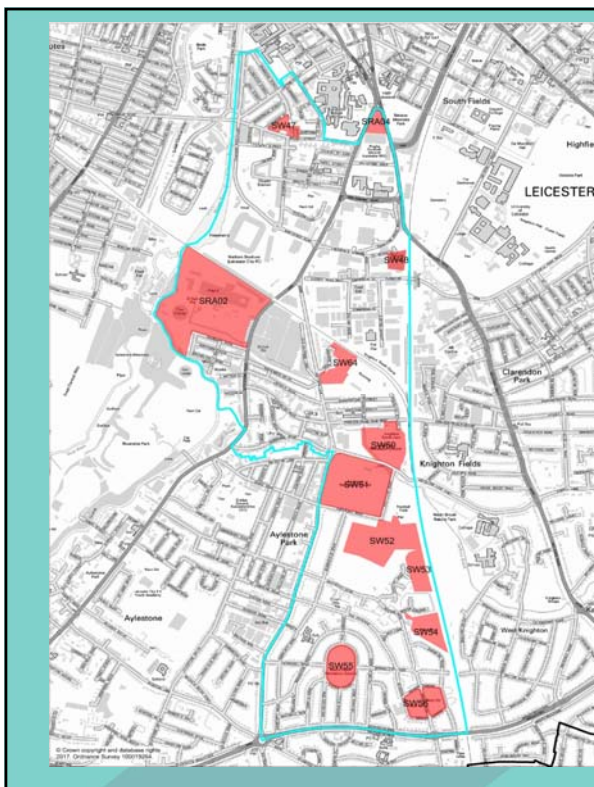
Key Issues /Challenges

- What infrastructure is needed
 - schools, health facilities, utilities,
- Future waste site and recycling rates
- Development Management Policies



Saffron Ward – What are your Local Issues ?





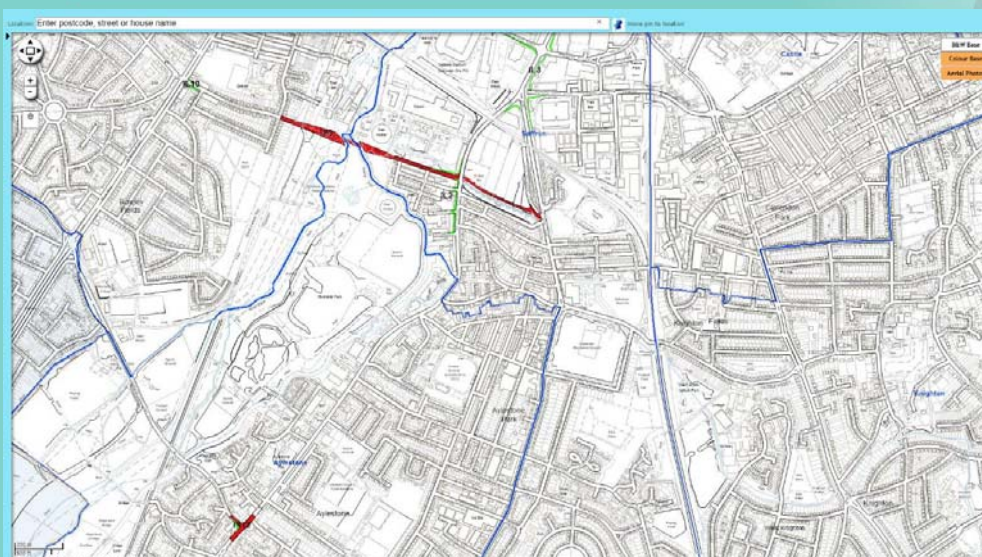
Saffron Ward

The “Sites” include some parks and green spaces in your Ward :-

Which are used most?
 – complete on line survey ;



Local issues: Highways



In Conclusion - Consultation is underway

- Seeking Your views
- 14 weeks, 26th July to 31st October 2017
- Leaflets, on-line consultation, on social media & in Libraries
- consultations.leicester.gov.uk

The screenshot shows the Leicester City Council website interface for the Leicester Local Plan consultation. The page header includes the council logo, navigation links (Consultation Hub, Find Consultations, We Asked, You Said, We Did), and a search bar. The main content area is titled 'Leicester Local Plan' and features a 'Consultation menu' section. This section explains that the questionnaire focuses on five documents that will form part of the new Local Plan and provides instructions on how to use the consultation tool. It includes a 'Please select an option' section with a list of topics: Emerging options (housing, jobs, shops, transport, the environment, etc), Potential development sites (includes interactive maps), Development management policies, Evidence base (research documents), Strategic environmental assessment / sustainability appraisal / equalities impact assessment, and Go to end of consultation. At the bottom of the menu, there are buttons for '< First', 'Save and come back later...', and 'Continue >'.

